

YEAR

2023

LINK MA ON SHAN RD (from HANG SHUN ST to SAI SHA RD)

COVERAGE (B) STATION

6225

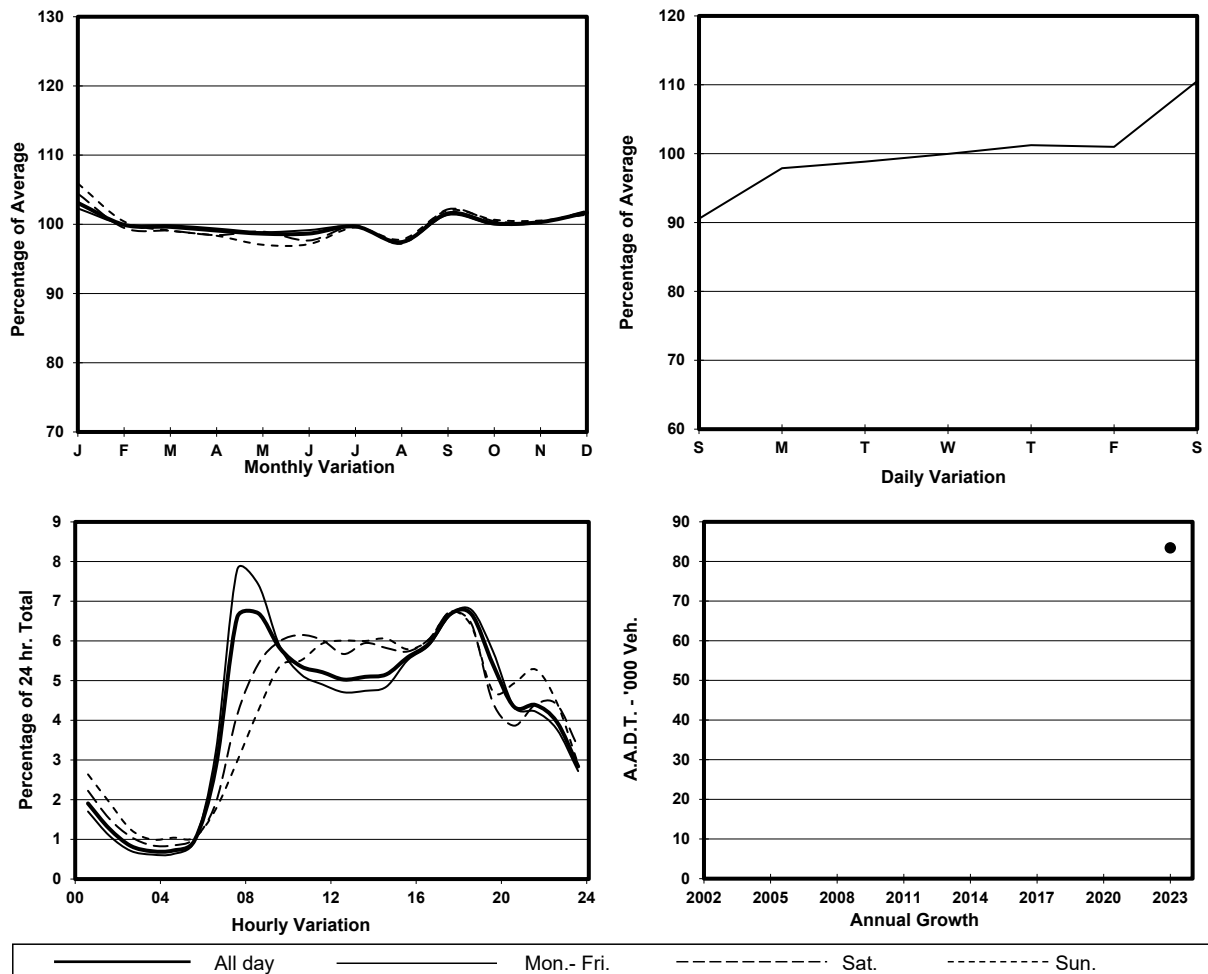
ROAD NETWORK

MAJOR

ROAD TYPE

RURAL TRUNK ROAD

## 1. TRAFFIC FLOW VARIATION AND GROWTH



## 2. TRAFFIC CHARACTERISTICS (BY DIRECTION)

Parameter	All - Day	Mon. - Fri.	Sat.	Sun.
<b>SOUTH BOUND</b>				
A.A.D.T.	41660	41910	46410	37330
R 12 / 24 - %	73.5	74.2	73.5	70
R 16 / 24 - %	88.4	88.6	88.4	87.3
AM Peak Hour	0700-0800	0700-0800	0900-1000	0900-1000
One-way flow at AM peak hour	3430	4190	3130	2270
T - % (AM)	-	5.8	-	-
PM Peak Hour	1700-1800	1700-1800	1700-1800	1700-1800
One-way flow at PM peak hour	2710	2670	3210	2580
T - % (PM)	-	8.5	-	-
Prop.of commercial vehicles - 16 hr.	-	8	-	-
<b>NORTH BOUND</b>				
A.A.D.T.	41750	41890	46000	38430
R 12 / 24 - %	66.1	66.4	66.7	64.2
R 16 / 24 - %	87.4	88.1	86.1	85.5
AM Peak Hour	0800-0900	0800-0900	0900-1000	0900-1000
One-way flow at AM peak hour	2320	2520	2400	1790
T - % (AM)	-	8.9	-	-
PM Peak Hour	1800-1900	1800-1900	1700-1800	1700-1800
One-way flow at PM peak hour	3140	3340	3020	2530
T - % (PM)	-	3.7	-	-
Prop.of commercial vehicles - 16 hr.	-	6.9	-	-

## 3. OTHER INFORMATION AND COMMENT

**4. Vehicle classification and occupancy - Monday to Friday**

Time		Class of vehicle									
		Motor Cycle	Private Car	Taxi	Private LB	PLB	Goods veh.		Non Fr. Bus	Fr. Bus	
							Light	M & H		SD	DD
0700-0800 Peak hour	Pro	2.5	62.6	12.2	1.3	2.3	10.6	2.1	3.8	0.0	2.6
	Ocp	1.2	1.2	1.8	2.9	14.5	1.2	1.1	10.5	0.0	29.7
0800-0900	Pro	2.3	66.0	11.4	1.6	1.8	10.4	2.2	2.5	0.0	1.8
	Ocp	1.1	1.2	1.9	5.0	16.5	1.5	1.3	16.6	0.0	30.2
0900-1000	Pro	1.6	48.9	15.9	1.6	1.9	20.4	5.3	2.6	0.0	2.1
	Ocp	1.1	1.2	1.8	2.0	13.0	1.4	1.2	8.3	0.0	14.2
1000-1100	Pro	2.4	44.1	16.7	1.5	1.8	24.6	5.7	1.8	0.0	1.6
	Ocp	1.0	1.3	1.7	1.9	12.1	1.4	1.4	5.5	0.0	13.5
1100-1200	Pro	2.2	45.3	14.4	1.4	2.3	24.9	6.3	1.9	0.0	1.3
	Ocp	1.0	1.3	1.7	3.5	11.2	1.4	1.3	3.2	0.0	14.8
1200-1300	Pro	1.6	47.1	11.9	1.5	3.1	25.6	5.6	2.5	0.0	1.2
	Ocp	1.1	1.3	1.9	4.2	9.3	1.4	1.3	5.5	0.0	15.8
1300-1400	Pro	1.5	54.2	11.2	1.3	2.6	19.5	6.8	2.0	0.0	0.9
	Ocp	1.0	1.4	1.9	3.2	10.2	1.4	1.4	7.9	0.0	21.3
1400-1500	Pro	1.9	47.1	11.1	2.2	2.2	25.5	5.7	3.2	0.0	1.1
	Ocp	1.1	1.3	2.0	1.9	12.0	1.5	1.4	1.7	0.0	14.2
1500-1600	Pro	1.7	52.5	13.3	3.1	2.2	17.9	4.4	3.9	0.0	1.1
	Ocp	1.1	1.4	1.7	7.3	14.5	1.4	1.2	12.7	0.0	12.4
1600-1700	Pro	2.2	50.5	13.2	3.1	1.8	19.4	3.8	4.8	0.0	1.3
	Ocp	1.0	1.3	1.7	2.8	15.2	1.3	1.2	5.2	0.0	19.0
1700-1800	Pro	4.3	56.6	11.0	2.4	2.6	15.9	3.0	3.0	0.0	1.3
	Ocp	1.1	1.3	1.9	1.9	16.1	1.2	1.2	11.4	0.0	21.9
1800-1900	Pro	4.0	66.2	10.0	0.4	2.2	11.7	1.7	2.1	0.0	1.6
	Ocp	1.1	1.3	1.8	2.0	14.9	1.1	1.1	16.4	0.0	38.9
1900-2000	Pro	1.4	75.2	10.2	0.1	1.7	7.3	0.7	1.3	0.0	2.0
	Ocp	1.0	1.2	1.8	2.5	13.6	1.2	1.2	6.4	0.0	20.2
2000-2100	Pro	3.5	62.6	18.6	0.2	2.4	8.8	1.5	0.7	0.0	1.6
	Ocp	1.1	1.3	1.6	1.0	9.9	1.2	1.1	2.0	0.0	15.0
2100-2200	Pro	3.5	66.6	19.6	0.1	2.3	4.4	0.9	0.9	0.0	1.6
	Ocp	1.1	1.2	1.7	1.0	11.1	1.3	1.0	5.6	0.0	22.9
2200-2300	Pro	2.8	63.6	21.0	0.1	3.1	4.6	1.3	1.0	0.1	2.4
	Ocp	1.2	1.2	1.7	3.0	9.3	1.3	1.2	3.9	1.0	12.3
16 hours	Pro	2.5	57.5	13.4	1.4	2.2	15.4	3.4	2.5	0.1	1.6
	Ocp	1.1	1.3	1.8	3.4	12.9	1.4	1.3	9.0	1.0	21.4

**Legend: Pro.** Proportion of vehicles in % (Sum may not add up to 100% due to figure rounding)\*

**Ocp.** Average occupancy of vehicles including both driver and passengers\*

**M&H** Medium and Heavy

\* All traffic data are collected from combined bounds